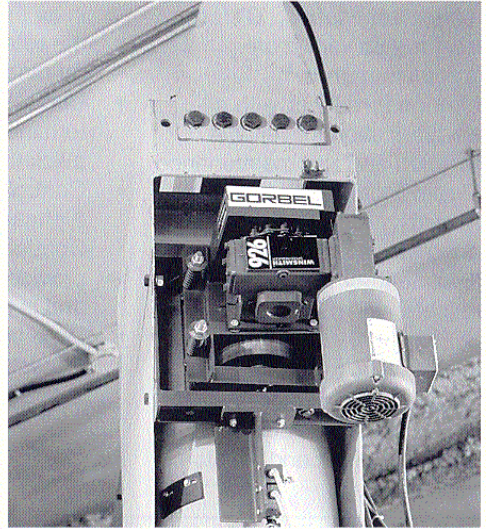
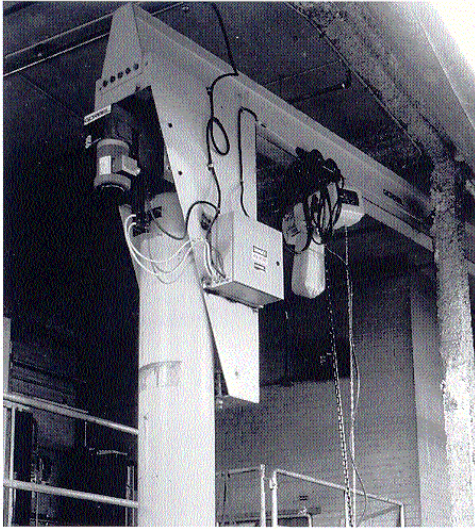


Motorize A Manual Rotation Jib Crane

Universal Motorized Drive Retrofit



MOTORIZED YOUR FREE STANDING JIB CRANE APPLICATIONS

Upgrade your present free standing jib crane to maneuver difficult loads with motorized power from Gorbel. The *Retrofit Traction Drive* kit will fit all free standing jibs with box-style head assemblies. Capacities are available from 1/4 ton to 5 tons and spans to 20 feet.

TRACTION DRIVE

When load weight or operation frequency makes manual rotation non-economical, impractical or unsafe on an existing manual rotation jib crane, you need Gorbel's Retrofit Drive. Gorbel's *Retrofit Traction Drive* kit gives you that power at a fraction of the cost of a new motorized jib.

The Retrofit drive powers large, heavy-walled rollers. This modular drive unit can be mounted in the box-style head assembly on any brand of jib crane. A specially designed roller surface grips the mast, to drive the jib smoothly. Standard rotation speed is 1/2-rpm nominal (for indoor applications only).

DESIGNED FOR EASY INSTALLATION

No matter who made your jib crane, YOU can motorize it easily with the Gorbel *Retrofit Traction Drive* kit. The modular drive assembly bolts to the back of the box-style head assembly. The drive roller is easily adjusted to ensure a constant driving force. Controls are completely wired at the factory, and a detailed installation and maintenance manual is included with each kit.

QUALITY TESTED AND INSPECTED

All Gorbel *Retrofit Traction Drive* kits are thoroughly inspected and tested before shipment. Gorbel products are known and valued everywhere for dependability because we are willing to stand behind, and under, our products 100%.

SURPRISINGLY AFFORDABLE

- 2 year warranty
- Quick, reliable deliveries
- Puts motorized jib crane power at your fingertips

RETROFIT TRACTION DRIVE FEATURES

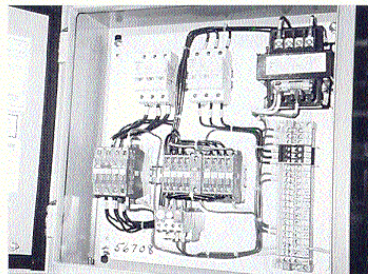
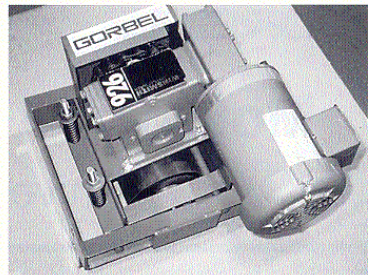
- Structurally reinforced modular drive unit for easy installation on your present jib
- Precision drive assembly with specially designed traction rollers for smooth acceleration
- Drive motor, class B, 40°C ambient continuous, "C" faced motor meets your most rigorous demands
- Worm gear reducer with oil-bath lubrication for reliable operation and low maintenance
- 1/2-rpm (nominal) rotation is standard
- Spring-loaded tension adjustment for constant roller pressure

OPTIONS

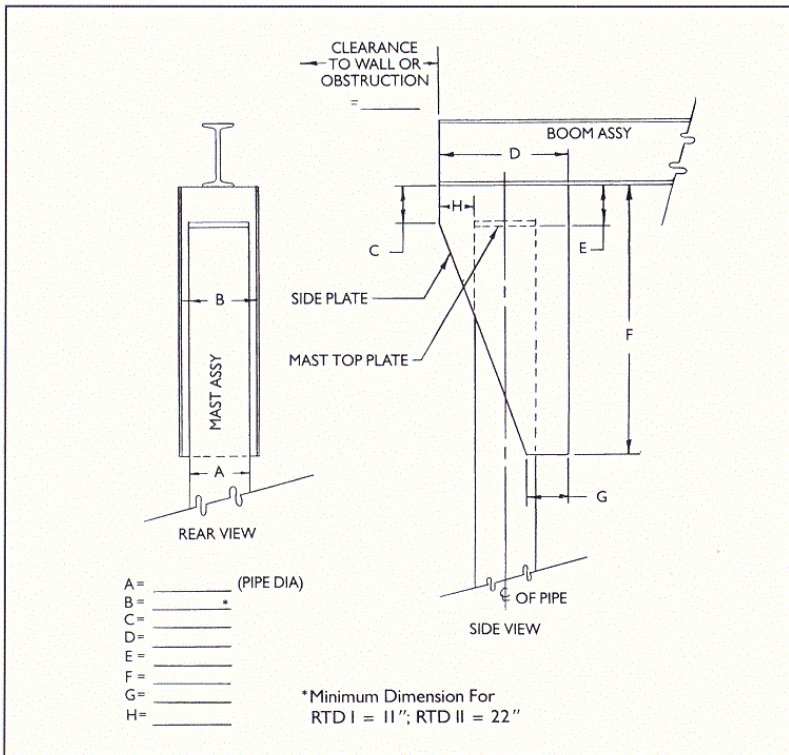
- Contact distributor for other options such as variable frequency drives and rotation limit switches.

ELECTRICAL FEATURES

- NEMA 12 enclosure with controls completely assembled, wired and enclosed in the main control enclosure
- Magnetic reversing starter
- AC mainline contactor (optional on Retro I)
- Thermal-overload protection is in all three phases to protect the rotation motor while running
- Control panel is prewired to a terminal strip that is labeled for quick final wiring in the field
- Controls are wired for 460-volt, 3-phase, 60-cycle power supply
- Control voltage transformer provides 110-volt control power and is fused for operator safety
- Fuse block included for circuit protection



HOW TO ORDER: Please fill in the dimensions below and submit with your order.



RETRO I (RTD I):

utilized for 1/4 - 2 ton capacity

RETRO II (RTD II):

utilized for 3 - 5 ton capacity

**SOLD ONLY THROUGH
 YOUR AUTHORIZED
 GORBEL DISTRIBUTOR:**

GORBEL
 A CLASS ABOVE

600 Fishers Run
 P.O. Box 593
 Fishers, NY 14453-0593
 Phone: (800) 821-0086
 Fax: (800) 828-1808
 e-mail: info@gorbel.com
<http://www.gorbel.com>